

FEBRUARY 2025

STAGE 3 FOUNDATION WATERING SCHEDULE



FOR INDUSTRIAL, COMMERCIAL, INSTITUTIONAL,
AND RESIDENTIAL WATER CUSTOMERS

CORPUS CHRISTI: FOUNDATION WATERING SCHEDULE

SUN	MON	TUES	WED	THURS	FRI	SAT
						1
2						8
9	NON-WATERING WEEK					15
16						22
23	NON-WATERING WEEK					28



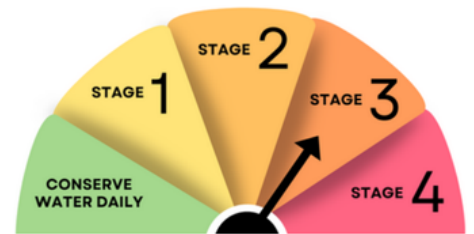
NORTH OF NORTHWEST BLVD & WEST OF US77: FOUNDATION WATERING SCHEDULE

SUN	MON	TUES	WED	THURS	FRI	SAT
						1
2						8
9	NON-WATERING WEEK					15
16						22
23	NON-WATERING WEEK					28

WHAT DOES THIS MEAN?

Watering foundations by hand or drip irrigation is allowed on your designated watering day.

Unessential landscape watering use is prohibited. This means irrigation with sprinklers or watering with a hand-held hose is not allowed.



EVERY DROP COUNTS
CONSERVE, CORPUS CHRISTI



CCW Corpus Christi Water
Serving the Coastal Bend



stage3.cctexas.com

FEBRUARY 2025

STAGE 3 FOUNDATION WATERING SCHEDULE



FOR INDUSTRIAL, COMMERCIAL, INSTITUTIONAL,
AND RESIDENTIAL WATER CUSTOMERS

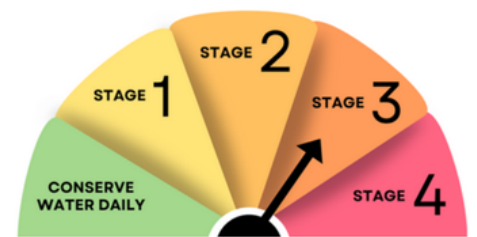
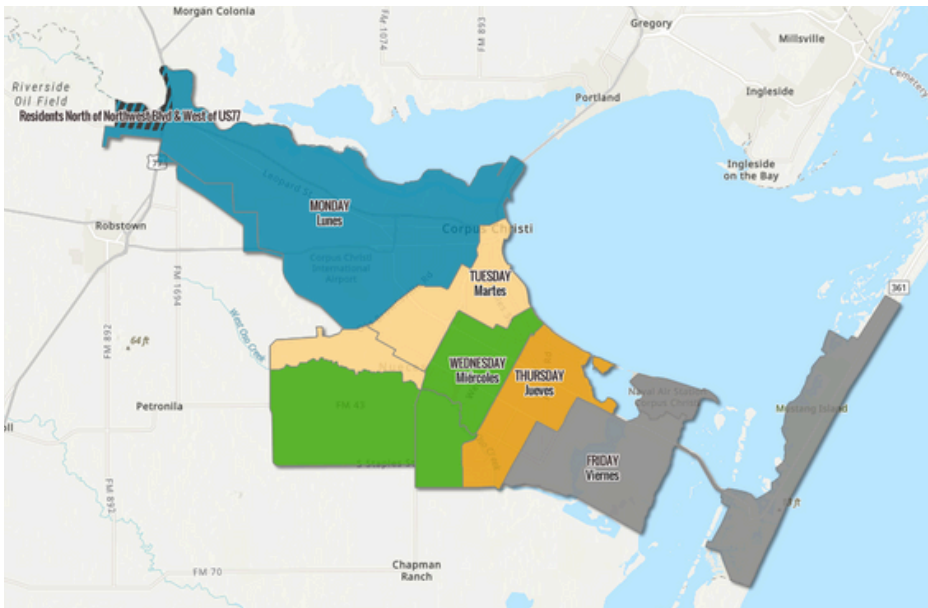
CORPUS CHRISTI: FOUNDATION WATERING SCHEDULE

SUN	MON	TUES	WED	THURS	FRI	SAT
						1
2						8
9	NON-WATERING WEEK					15
16						22
23	NON-WATERING WEEK					28

WHAT DOES THIS MEAN?

Watering foundations by hand or drip irrigation is allowed on your designated watering day.

Unessential landscape watering use is prohibited. This means irrigation with sprinklers or watering with a hand-held hose is not allowed.



EVERY DROP COUNTS
CONSERVE, CORPUS CHRISTI



MONDAY



TUESDAY



WEDNESDAY



THURSDAY



FRIDAY



CCW Corpus Christi Water™
Serving the Coastal Bend



stage3.cctexas.com

FEBRUARY 2025

STAGE 3 FOUNDATION WATERING SCHEDULE



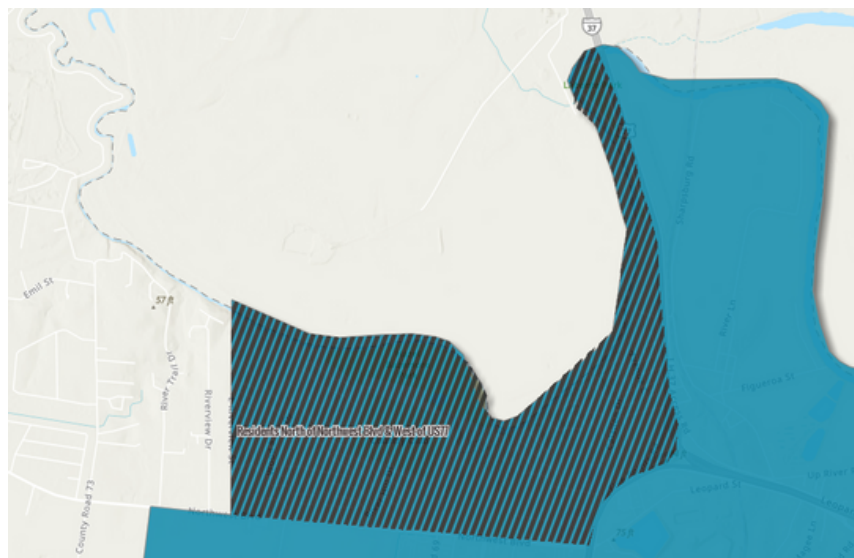
**FOR INDUSTRIAL, COMMERCIAL, INSTITUTIONAL,
AND RESIDENTIAL WATER CUSTOMERS**

NORTH OF NORTHWEST BLVD & WEST OF US77: FOUNDATION WATERING SCHEDULE

SUN	MON	TUES	WED	THURS	FRI	SAT	
						1	
2	 EVEN NUMBER ADDRESSES	3	4	 ODD NUMBER ADDRESSES	5	6	
9	NON-WATERING WEEK						15
16	 EVEN NUMBER ADDRESSES	17	18	 ODD NUMBER ADDRESSES	19	20	
23	NON-WATERING WEEK						28

**MONDAY FOR ADDRESSES
ENDING IN 0,2,4,6, OR 8**

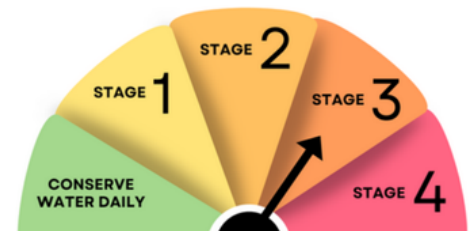
**WEDNESDAY FOR ADDRESSES
ENDING IN 1,3,5,7, OR 9**



WHAT DOES THIS MEAN?

Watering foundations by hand or drip irrigation is allowed on your designated watering day.

Unessential landscape watering use is prohibited. This means irrigation with sprinklers or watering with a hand-held hose is not allowed.



EVERY DROP COUNTS
CONSERVE, CORPUS CHRISTI



CCW Corpus Christi Water™
Serving the Coastal Bend



stage3.cctexas.com